



## UpGrade®

## RIGID AND AESTHETIC RACKABLE FENCE SYSTEM

### Product detail



- Aesthetic and reliable protection
- Flexible and efficient installation
- 20 year warranty
- Superior anti-corrosion coating

#### Aesthetic appeal

This ornamental fence system offers a luxurious look, is available in a wide variety of styles and configurations, all finished with a super durable Architectural Grade powder coating.

#### Reliable design

The innovative design utilizes an internal mechanical picket to rail construction which is superior to other products that have exposed fasteners which can come loose or welded tabs which may break under a load.

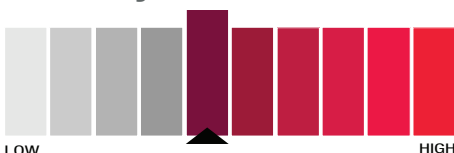
#### Flexible installation

UpGrade® panels have the ability to rack to follow the natural contour of most landscapes. A variety of brackets are available for ease of installation.

#### Versatile

A range of picket styles and panel heights to select from makes UpGrade® a versatile perimeter solution for commercial properties, public spaces and buildings, schools and sports facilities.

### Security level



### Applications



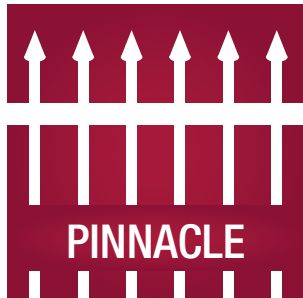
### Functionalities



## Complete Range

Available for commercial and industrial installations in four picket styles:

- Pinnacle (press point)



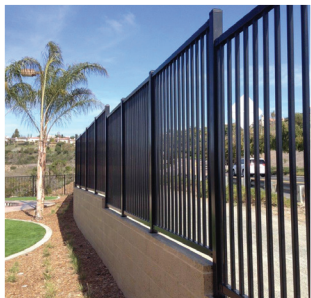
- Summit (flat top picket)



- Defender (security arch)



- Landmark (rail top)



## UpGrade Standard Configurations

	UpGrade-C Commercial	UpGrade-I Industrial
Panel width	8'	8'
Panel height	4', 5', 6', 7', 8'	4', 5', 6', 7', 8'
Pickets	3/4" - 18 ga./16 ga.	1" - 16 ga./14 ga.
Rails	1 1/2" - 15 ga.	2" - 13 ga.

## Panels

UpGrade® panels are manufactured utilizing a unique internal mechanical picket to rail construction. This "patented design" eliminates picket rattle or removal found in other products. This unique design allows the panels to rack to follow changes in grade.

## Gates

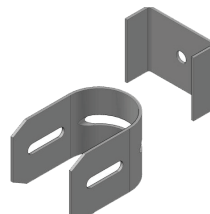
Choose from a range of gate styles including pedestrian and swing gates, as well as slide and cantilever gates.

## Superior Coating

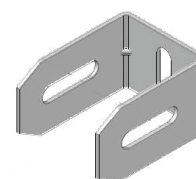
The panels are manufactured using galvanized steel, coated with Betafence's exclusive Architectural Grade Powder Coat. This coating is super-durable and environmentally sound. Our powder coating provides the industry's highest weatherability and Gloss Retention in UV exposure – up to 5 times longer than competitors' powder coatings.

## Bracket Options

Panels are attached with high-strength steel brackets to galvanized and powder-coated square tubular steel posts.



Swivel Bracket



Extended Rail Hanger

## Warranty

The UpGrade® System is backed by a 20 year manufacturer's warranty.

For more information contact us at 504-948-8625 or email [orders@altamax.net](mailto:orders@altamax.net)



**ALTA MAX**

Europe  
 Blokkestraat 34b  
 B-8550 Zwevegem  
 Tel: B: +32 56 73 46 46  
 Tel: NL: 0800 022 76 98

USA  
 3309 SW Interstate 45  
 Ennis, TX 75119  
 Tel: +1 972 878 7000  
 +1 888 650 4766



Middle East  
 P.O. Box 293517 DAFZA,  
 Building E 5, Block A  
 8th Floor, Office 802  
 Tel: +971 04 6091122

Africa  
 B10, Bergriver Business Park  
 Paarl,  
 7646  
 Tel: +27 021 868 7300

Betafence is the world market leader in fencing solutions, access control and detection for perimeter protection. All Betafence companies and product names are trademarks owned by PRÆSIDIAD Group Limited. Modification in products and assortment are subject to change without prior notice.

Proud to be a PRÆSIDIAD brand, Betafence is part of a global network, working alongside Guardiar and Hesco as a leader in perimeter security systems and solutions. For more information please visit [praesidiad.com](http://praesidiad.com).

**B BETA FENCE**

Securing What Matters

[info@betafence.com](mailto:info@betafence.com) | [betafence.com](http://betafence.com)